



FACT SHEET

SINGAPORE SPORTS HUB

All information is correct as at May 2024

SINGAPORE SPORTS HUB



The Singapore Sports Hub is one of the world's first fully integrated sports, entertainment & lifestyle destination.

Spanning a mammoth 35 hectares of land in the heart of the city, the Singapore Sports Hub houses a unique cluster of world-class facilities comprising the National Stadium, Singapore Indoor Stadium, OCBC Arena, OCBC Aquatic Centre, Water Sports Centre, Kallang Wave Mall, Singapore Sports Museum, and Shimano Cycling World.

Officially declared open by Prime Minister Lee Hsien Loong in July 2015, the Singapore Sports Hub incorporates cutting-edge, environmentally conscious design and construction. The campus comprises different multi-purpose venues with the capacity and professional expertise to host a variety of events ranging from sports and entertainment to lifestyle and community events. This mega-project was conceived as part of the Singapore Government's vision to enhance the nation's sporting landscape and built with the community in mind.

The in-house community programme – Experience Sports – enables everyone to participate in sports and fitness while the community facilities, which are open daily, encourage them to exercise at their convenience. These facilities include the 100PLUS Promenade, beach volleyball courts, outdoor hard courts, skate park, giant chess and lawn bowls.

NATIONAL STADIUM



The centrepiece of the Singapore Sports Hub is the 55,000 capacity National Stadium that provides spectacular views of the waterfront and Singapore city skyline.

The National Stadium features the world's largest free-spanning dome, a retractable roof and comfort cooling technology for spectators – design elements that complement Singapore's humid climate. The retractable roof also features an innovative lighting system that is embedded with 20,000 LEDs and can serve as a giant screen with the projection visible from both inside and outside the stadium.

This unique National Stadium is also capable of hosting a multitude of events including football, rugby, cricket and athletics, concerts, family entertainment shows, national and community events.

To date, notable events held at the National Stadium include large-scale events such as the National Day Parade, 28th SEA Games and 8th ASEAN Para Games; sporting spectacles such as the HSBC Singapore Rugby 7s, 83rd Singapore Open Track & Field Championships, FIFA World Cup 2026™ Qualifiers, Cigna Healthcare HYROX Singapore, and Standard Chartered Singapore Marathon 2023; entertainment by leading International and Asian artistes including Coldplay, Harry Styles, Backstreet Boys, Foo Fighters, Madonna, Mariah Carey, One Direction, Black Pink, Mayday, Jay Chou, JJ Lin, and A-Mei; and community events such as the OCBC Cycle, National Steps Challenge, and The Straits Times Run.

Configuration modes include:

- Football/Rugby: 55,000
- Cricket: 52,000
- Athletics: 50,000

Hospitality includes:

- 62 Executive Suites
- 456 Premium Plus Seats
- 544 Premium Seats
- 2 Members' Lounge

SINGAPORE INDOOR STADIUM



Built in 1989, the Singapore Indoor Stadium is Asia's premier entertainment venue. This air-conditioned, multi-purpose pillarless sports and entertainment facility is designed by internationally acclaimed architect Kenzo Tange and officially declared open by Singapore's first Prime Minister, Lee Kuan Yew.

The Singapore Indoor Stadium has hosted a wide variety of sports, entertainment and community events, including Western and Asian superstars, family entertainment, award shows, sports matches and other large-scale events. It offers world-class technical facilities and a flexible configuration that scales from 4,000 to 12,000 spectators.

Events held at the Singapore Indoor Stadium include concerts by Ed Sheeran, Britney Spears, Mayday, EXO and G-Dragon; sports events such as ONE Championship, WWE 2017, UFC Fight Night, WTA Finals, FIBA Intercontinental Cup as well as productions like the Home Team Gala Show and Disney on Ice.

Configurations include:

- Centre Stage: up to 12,000
- East Stage: up to 9,000
- North Hall Stage: up to 6,000
- South Stage: up to 10,000

Hospitality includes:

- 2x Ground Floor Function Room (150 each)
- OCBC Premier Suite (Capacity 144)
- 234 Club Seats

OCBC ARENA



The OCBC Arena is made up of six indoor sports halls, designed for multi-purpose use by the public or national athlete training. Sports that can be played at the OCBC Arena include badminton, basketball, netball, volleyball, table tennis, rhythmic gymnastics and silat training.

The OCBC Arena is home to seven National Sports Associations:

- Boccia
- Netball Singapore
- Singapore Badminton Association
- Singapore Gymnastics
- Singapore Silat Federation
- Singapore Table Tennis Association
- Volleyball Association of Singapore

The venue utilises a controlled, natural daylight and mixed-mode ventilation system, which gives the option of air-conditioning for competition events or a low-energy, natural ventilation system for everyday use.

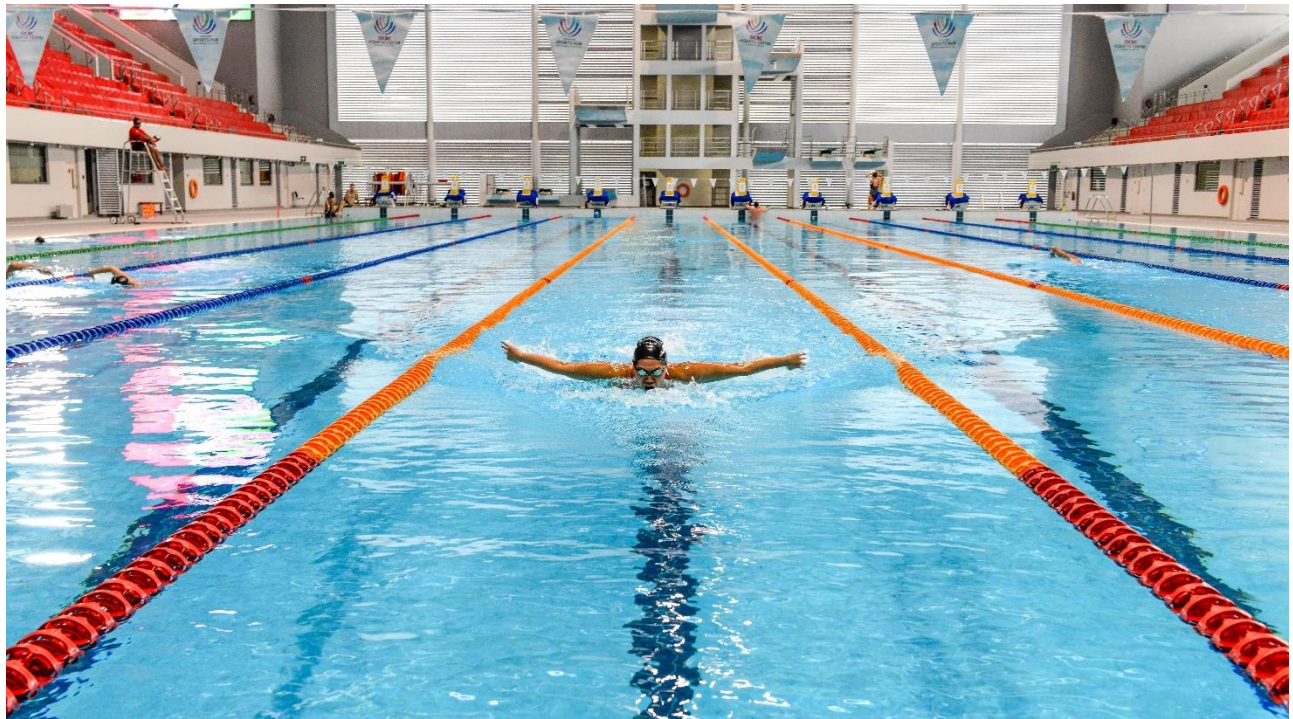
Default hall configurations include:

- Badminton Courts
- Basketball Courts
- Netball & Volleyball Courts
- Table Tennis

With a capacity of 300 to 3,000, the OCBC Arena allows for simultaneous usage of the six halls and can be used as a venue for indoor sports events, meetings, conferences and exhibitions. Events hosted include the National School Games, Fencing Championships, Powerlifting Open, Singapore Smash, Mirxes Nations Cup, Vitagen Singapore Squash Open, and 14th Women's World Floorball Championships.

The Sports Hub Gym is on level two of the OCBC Arena and features the latest gym equipment including resistance machines, assisted machines, cardio machines, cable machines and free weights.

OCBC AQUATIC CENTRE



The 3,000-seat OCBC Aquatic Centre is a world-class facility that caters to the general public and national athletes. Additional temporary seating can expand the seating capacity to 6,000 seats, enabling it to host premier regional and international aquatic competitions and community-run events.

Features include:

- 50m x 10 lane competition pool (3m deep)
- 25m wide diving pool/multi-purpose pool (5m deep)
- 50m x 8 lane training pool (1.35 - 2m deep)

The pools meet Fédération Internationale de Natation (FINA) standards, and are suitable for swimming, water polo, diving and synchronised swimming events. In the competition pool, a movable bulkhead has been installed to allow short and long-course pool configurations.

The OCBC Aquatic Centre roof is designed to ensure adequate daylight, ventilation and air handling. In addition, large industrial fans are installed to provide an overall better quality of environment inside the facility.

The OCBC Aquatic Centre is home to Singapore Swimming Association and was the host venue for the 28th SEA Games aquatics discipline, where Joseph Schooling set nine Games records and Singapore Synchronised Swimming Team won their first gold medal in the sport. It has also hosted various events including the FINA World Junior Swimming Championships, FINA Diving Grand Prix, FINA Swimming World Cup, Singapore National Age Group Championship, and Citi Para Swimming World Series Singapore.

Hospitality

- VIP Lounge
- VIP Area with separate lift access

Swimming lessons and aqua fitness classes for children and adults are also offered at the venue.

WATER SPORTS CENTRE



The picturesque Water Sports Centre is located along the Kallang Basin and caters to both national athlete training and public use. The Centre offers an array of canoes, kayaks, and dragon boats for public rental.

The watercrafts available for rental include:

- Canoes – Open-Deck and Outrigger
- Dragon Boats
- Kayaks – Single Kayak, Double Kayak and Sit-On-Top Double Kayak

The Water Sports Centre is home to the Singapore Canoe Federation and Singapore Dragon Boat Association.

The Centre has the largest launch pontoon (open motorboat) in Singapore and offers a 500-meter Regatta course with six lanes (81m in width) that can be expanded to nine lanes for water sports events. Some of the events held at the venue include Water Sports Community Day, Police Sea Sports Championship, Singapore Canoe Marathon, and Singapore World Water Day. The Regatta course is supported with a Finish Tower for judges' positions, a control room, and camera positions.

Courses and programmes offered by the Water Sports Centre include:

- Kayak 1 Star Personal Skill Award
- Kayak 2 Star Personal Skill Award
- Canoe & Kayak Orientation Programmes
- Dragon Boat Orientation Programmes

KALLANG TENNIS HUB



The Kallang Tennis Hub is Singapore's first international tournament-ready indoor tennis facility. This 24,514m² building has also been awarded BCA's Greenmark Platinum Super Low Energy. The Kallang Tennis Hub will enable Singapore to host more international tennis tournaments, such as the ATP 250 Tournament that was held in Singapore in 2021 and previous editions of the WTA Finals.

The hub consists of:

- Seven indoor courts
- 12 full sized outdoor courts
- Two junior sized outdoor courts
- Seating gallery of 1,297 capacity

The tournament related facilities include:

- 1 VIP room
- Players' Lounge
- Doping Control Room
- Electronic Line Control capabilities
- Commentator Box
- LED scoreboard

KALLANG FOOTBALL HUB



The Kallang Football Hub consists of one full natural pitch, three artificial turf pitches and three futsal courts. Of these, four are sheltered which allows for all-weather play and training.

The Hub also functions as the National Training Centre for football and the National Development Centre for the Unleash the Roar! Programme.

Other facilities include:

- A high performance indoor gym which includes youth-specific equipment and sports science capabilities
- Outdoor 100m running track which is made from recycled shoe granules.

SPLASH-N-SURF

Located on Level 3 of Kallang Wave Mall, the Splash-N-Surf features a variety of recreational water activities available for people of all ages.



STINGRAY®

For surfing enthusiasts, the Stingray® is the only aquatic half-pipe ride in Singapore for body boarding and skim boarding, where users can ride up 90 degrees on a curved wall.

To ensure the safety of users, only Stingray® boogie boards and skim boards can be used, and a rash guard and helmet always have to be worn. Users must attend a safety induction prior to using the facility. Only children with a height of 1.2m and above are allowed on the Stingray®.



LAZY RIVER

With a depth of 1m, the Lazy River is suitable for all ages to relax by leisurely floating along the river.



KIDS WATER PLAYGROUND

The Kids Water Playground has a Water Play Area and a Kids Pool suitable for families with young children aged 3 to 12.

SINGAPORE SPORTS MUSEUM



The Singapore Sports Museum is the only sports-dedicated museum in Singapore and ensures that the legacy and heritage of sports in Singapore is preserved well into the future.

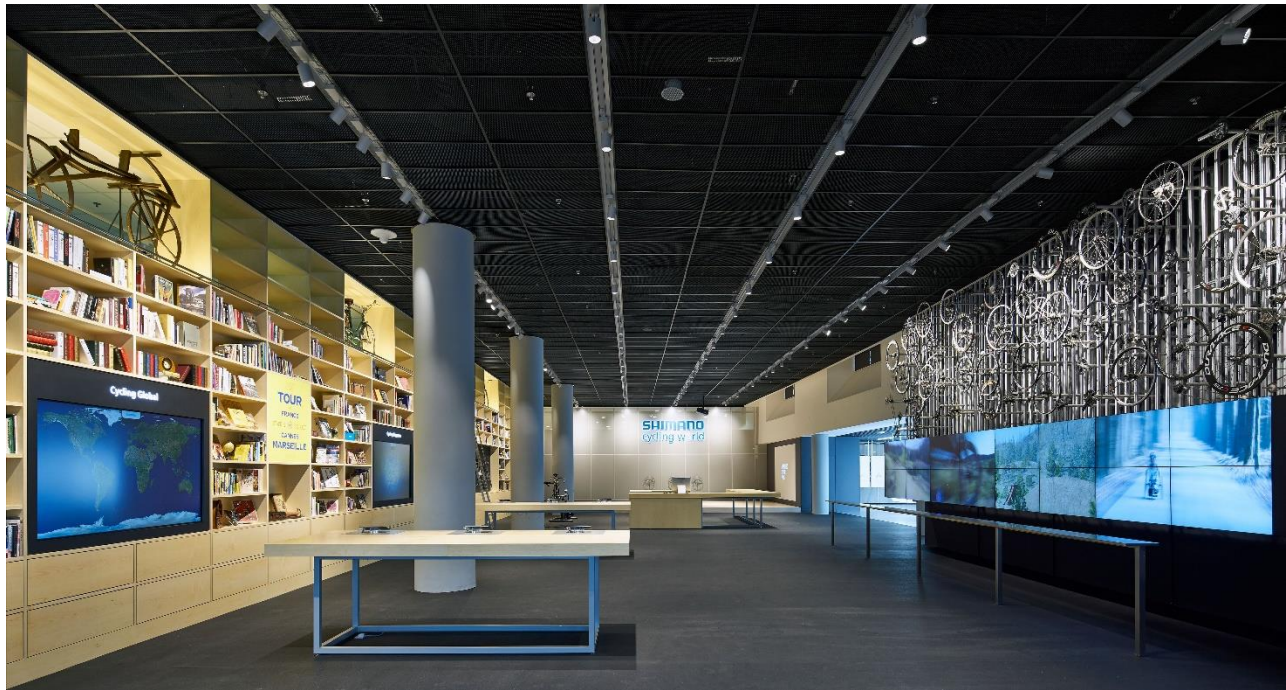
First established in 1983, the museum was originally located at the old National Stadium. It closed temporarily in November 2007 and reopened in 2014 at the Singapore Sports Hub.

At the Singapore Sports Museum, visitors can learn about the multi-faceted development of sports and explore the sporting heritage of Singapore. To promote sports knowledge and learning, the Singapore Sports Museum also features campus heritage, education and engagement programmes, including learning journeys, museum tours and temporary exhibits.

To commemorate the hosting of the Singapore 2010 Youth Olympic Games (YOG), the Singapore Youth Olympic Museum (SYOM) was established and is housed within the Singapore Sports Museum. It continues the Singapore Youth Olympic Games Organising Committee's (SYOGOC) vision of "Inspiring Youths, Sporting Singapore" and serves to promote Olympism within the region.

The SYOM provides a platform for visitors, particularly youths, to discover and gain insight on the spirit of the Olympic Games, learn the Olympic Values – Excellence, Friendship and Respect – and be inspired to embrace, embody and express these values in their lives. Visitors will be able to trace Singapore's journey in the bidding and hosting of the inaugural Youth Olympic Games.

SHIMANO CYCLING WORLD



Shimano Cycling World is Shimano's first experiential and interactive bicycle centre in Singapore. Located next to the Singapore Sports Museum, Shimano Cycling World aims to enrich and develop the local cycling culture, promote cycling as a lifestyle in Singapore and serves to heighten awareness on the physical, mental and spiritual benefits of cycling.

The interactive cycling exhibits in Shimano Cycling World are categorised into three themes:

- **Connect:** Connect to the world of cycling adventures and rediscover the joy and wonder of cycling by sharing experiences and getting tips from the bicycle specialists and staying updated with cycling events in Singapore and across the world.
- **Experience:** Discover new routes and trails to experience cycling from a new perspective.
- **Learn:** Immerse in the vast library of books, artefacts and bicycles, and learn how bicycle technology can improve one's riding experience.

Basic bike maintenance workshops, bike cruises and guided tours are also organised regularly at the venue.

KALLANG WAVE MALL



The 41,000 square metres Kallang Wave Mall at the Singapore Sports Hub is the place where visitors can shop, dine and play. It is Singapore's first ever mall that offers visitors sporting, lifestyle and entertainment activities under one roof.

Besides having a diverse selection of food and beverages, fashion brands and a hypermart, there is also an indoor rock-climbing wall in the mall.



CLIMB CENTRAL

Located in the basement of the Kallang Wave Mall, Climb Central's indoor rock-climbing wall is suitable for climbers of all ages and abilities. It offers more than 1,000 square metres of climbing surface and features lead climb, top rope and boulder wall facilities.

COMMUNITY FACILITIES

A variety of community sports and lifestyle facilities are available at the Singapore Sports Hub. These include:



100PLUS PROMENADE

The 100PLUS Promenade is Singapore's largest, fully sheltered sports and recreational space around the National Stadium. On non-event days, the 100PLUS Promenade provides an attractive space for the general public to get active together, without adverse weather conditions spoiling the fun. The innovative design features an elevated platform that provides picturesque views of the city, and acts as a central connector to all major facilities within the Singapore Sports Hub campus.



SPORTS HUB SKATE PARK

The Sports Hub Skate Park is located near Gate 15 along the 100PLUS Promenade. It features a park course with rails, fun-box and a mini-quarter pipe. The Park boasts a variety of basic ramps and obstacles for action sports enthusiasts. This facility is designed for skateboarding and inline skating.



SPORTS HUB BEACH VOLLEYBALL COURT

Located next to the Water Sports Centre, the Sports Hub Beach Volleyball area accommodates two fully equipped beach volleyball courts. These courts are designed to mimic realistic beach elements while being conveniently located in close proximity to other sporting facilities within the Singapore Sports Hub.



SPORTS HUB HARD COURTS

The Sports Hub Hard Courts are located near Gate 13 along the 100PLUS Promenade and features three conventional hard courts that are open daily to the general public.



SPORTS HUB LAWN BOWLS

This community facility is located on level three, above the Singapore Sports Museum and features a finely laid 34m by 18m stretch of lawn with smooth manicured artificial turf.



OTHER COMMUNITY FACILITIES

- Sports Hub Giant Chess
- Exercise & Fitness Stations
- Kids Playground

TICKETING OPERATIONS

Singapore Sports Hub has widened its ticketing panel since January 2020.

Event Promoters can now choose their Ticketing Agent of choice. The appointed Ticketing Agent for each event will manage all ticketing operations including the purchase of tickets through their respective websites, mobile, call centres, as well as retail outlets for patrons who prefer to buy their tickets in person. The simple and convenient process for booking a ticket begins with following the link from Singapore Sports Hub event page (www.sportshub.com.sg/events). All ticketing-related enquiries will be handled by the appointed Ticketing Agent.

			
Address:	10 Eunos Road 8, #03-04, Singapore Post Centre Singapore 408600 <i>(accessible via Singapore Post Centre Main Lift Lobby on Level 1)</i>	2 Stadium Walk Singapore Indoor Stadium Singapore 397691	137 Amoy Street, Far East Square #03-05, Singapore 049965
Website:	www.sistic.com.sg	www.ticketmaster.sg	premier.ticketek.com.sg
Hotline:	+65 6348 5555	+65 3158 8588	+65 6817 6283
Enquiry:	feedback@sistic.com.sg	enquiry@ticketmaster.sg	customer-care@ticketek.com.sg
Retail outlets:	www.sistic.com.sg/agents	All SingPost Outlets www.singpost.com/list-of-post-offices	Selected IUIGA Home and Living Stores https://premier.ticketek.com.sg/themes/asia-1/singapore/outlets/agency.aspx

The central box office at Singapore Sports Hub will be manned by the appointed Ticketing Agent of the respective event and will operate only on event days.

Location of Singapore Sports Hub Box Office (Note: open only on event days)

- Singapore Indoor Stadium
- OCBC Arena
- OCBC Aquatic Centre
- Kallang Wave Mall

GETTING TO SINGAPORE SPORTS HUB



The Singapore Sports Hub is easily accessible via all transport modes. Public transport by MRT and bus are the easiest forms of transport to get here. Full details here <https://www.sportshub.com.sg/directions-and-map>. On event days, there may be traffic congestion and crowds. Please come early for an enjoyable experience.

MEDIA CONTACT

For more information, please email:
SportsHubComms@sportshub.com.sg